



HANWELL PARK ACADEMY

Parent School Support Committee Minutes

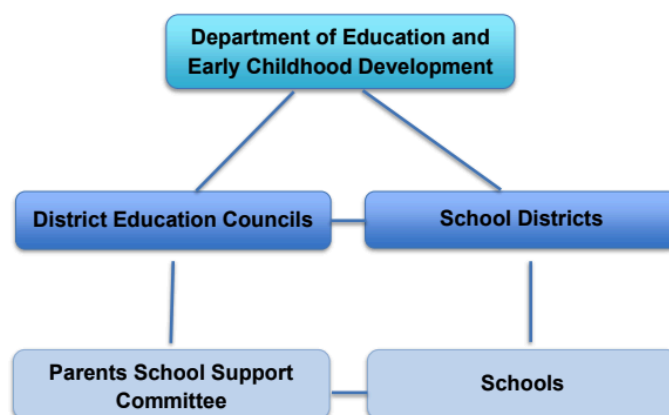
DATE	October 30, 2024 Start Time: 6:03pm	UPCOMING MEETINGS	TBC
PSCC MEMBERS PRESENT		AUTHOR(S)	Kailynn Clark
SCHOOL/DEC REPRESENTATIVES		REGRETS	

Call to Order - We respectfully acknowledge the territory in which we gather is the unceded ancestral homeland of the Wulastukwey people

Welcome, Introductions

1. PSCC Committee Introduction

- Review of in scope, out of scope topics ([Appendix A](#) for short version, or full in [PSCC Handbook](#))
 - “The Parent School Support Committee (PSCC) is a group of parents, guardians and community members who work in an encouraging, advisory, and collaborative fashion with the School Principal and staff to ensure the best possible learning opportunities for students at their school.”
 - The committee addresses the broad issues related to the education of all students in the school, with the goal of enhancing student learning. Primarily these issues arise from input, discussions, study and monitoring of the school plan. This includes helping the school by advising on which aspects of learning that need to be improved; the priority of those identified learning areas; and strategies/actions that focus on those areas.



- Committee Norms reminder
- Elect Vice Chair - Congratulations to volunteer Victoria McKenzie, uncontested



2. Chair Report

- Brief 2023 Recap of core accomplishments
 - Initiated the Inclusive Committee for Exceptional Students
 - Supported the Mission/Vision Materials (voting on visuals and financial support)
 - School Improvement Plan data review & voting on priorities
 - Initiated Community Engagement discussions in smaller committee team
- PSSC Budget 2023-2024 – \$1642.94
 - Discussion/Reminder: Graphic Design \$700.00 (Graphic Artist) of school

3. Principal's Report

1. Settling in as new principal
2. PBIS initiatives through EECD
3. School goals not yet determined
4. AST working closely with staff and small groups - using DIBELS to determine student needs in Reading Fluency, assessing accuracy, fluency and comprehension when reading
5. Caribou Math competitions
6. HHL
7. Holistic Curriculum still the focus
8. LEAD team, PBIS team - teacher leadership opportunities
9. Student Leadership with Mr. Gardiner
10. 2 Soccer banners
11. Upcoming Remembrance Day ceremony
12. School Dance - change of plans
13. Advocating for more support for ESS
14. More PE this year and dedicated Art, Technology and Music for middle school students

4. Teacher's Update

5. DEC Representative Report (if applicable)

6. School Committee Updates

- Home and School Committee
- Sub Committee Call Outs
 - Mission/Vision
 - Inclusive Committee for Exceptional Students

4. New Business

- Community Engagement Plan
 - Next steps: Smaller committee meetings
 -
- Record Keeping
 - Leveraging online documents and folders for access, revisiting historical meeting information and key committee resources

9. Adjournment at 7:26pm



Appendix A

DUTIES OF THE PARENT SCHOOL SUPPORT COMMITTEE (PSSC)

(Education Act, Section 33)

(1) Advise the principal of the school respecting the establishment, implementation and monitoring of the school improvement plan which may include strategies for;

- (a) ensuring the language and culture of the school preserve and promote the language and culture of the official linguistic community for which the school is organized,
- (b) the school mission,
- (c) establishing school policies related to education, language and culture,
- (d) providing communication between the school and families residing in the area served by the school, and encouraging family involvement in the school,
- (e) establishing partnerships with the community to improve the quality of learning
- (f) developing a school climate and conditions to improve the quality of learning and teaching
- (g) establishing a positive pupil climate within the school, and
- (h) improving school property and facilitating use of the school by the community.

(1.1) The Parent School Support Committee at the school shall advise the principal of the school respecting the establishment, implementation and monitoring of the positive learning and working environment plan, which may include:

- (a) strategies and practices to promote respectful behaviour and a positive and inclusive social climate for all students and staff,
- (b) strategies and programs to prevent disrespectful behaviour or misconduct,
- (c) policies and practices to address disrespectful behaviour or misconduct in a timely manner and in a way that teaches and reinforces respect for other persons, and
- (d) appropriate support strategies for students participating in disrespectful behaviour and students who have been affected by the disrespectful behaviour of others.

(2) A Parent School Support Committee shall

- (a) Participate in the selection of the principal or any vice-principal of the school,
- (b) review the results of the school performance report,
- (c) advise the principal of the school in the development of school policies prepared in accordance with district and provincial policies,



- (d) provide, on the request of superintendent, input into any performance evaluation of the principal or any vice-principal of the school in matters relating to the duties of the Parent School Support Committee under this section, and
- (e) communicate with the District Education Council concerned with respect to matters relating to the duties of the Parent School Support Committee